

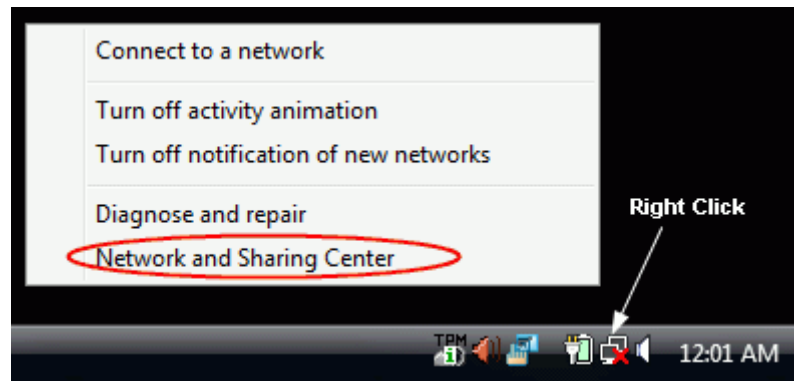
# INSTRUCTIONS FOR CONNECTING TO THE HAWKEYE WIRELESS NETWORK\*

\*Please note that these directions will work for **MOST** computers. For further assistance come to Bremer 116, the Academic Support Center

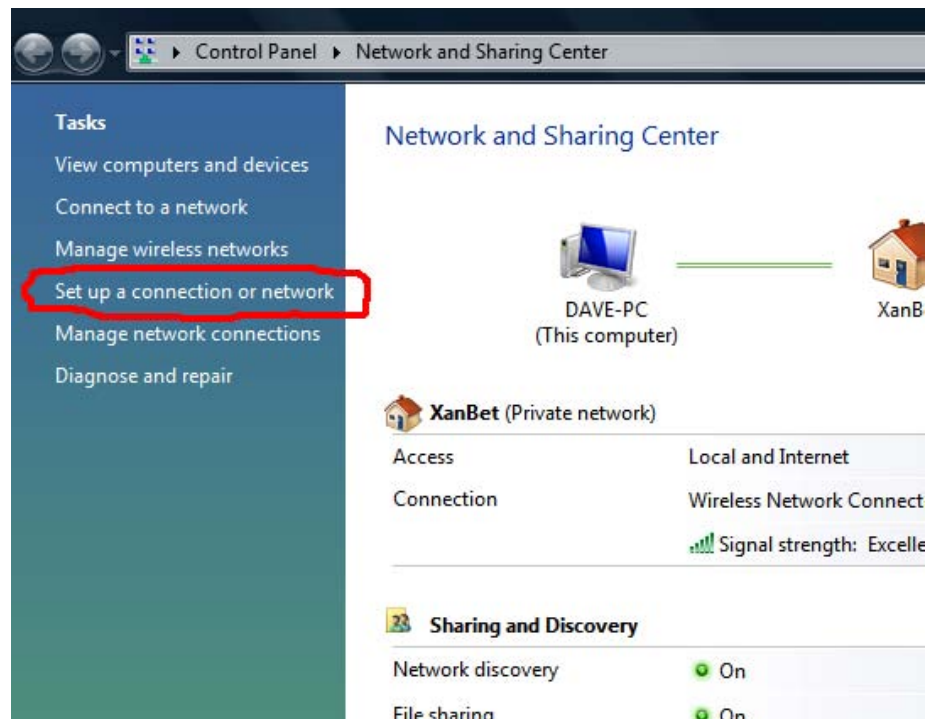
## Instructions for Windows Vista users:

**Step 1:** right click wireless network icon in lower right corner

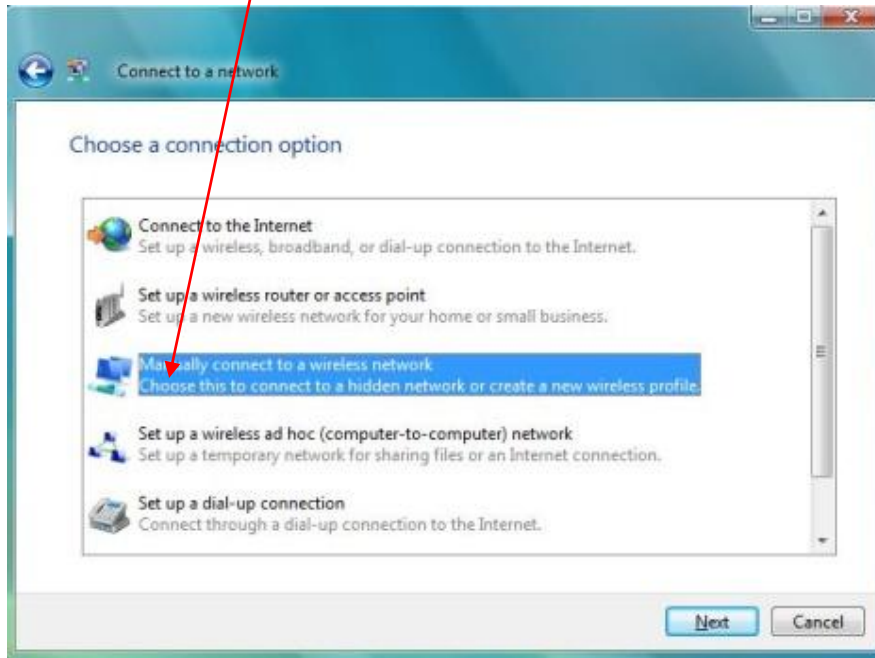
**Step 2:** select ð P g v y q t m " c p f " U j c t k p i " E g p v g t ö



**Step 3:** select ð U g v " w r " c " e q p p g e v k q p ö



**Step 4:** Choose *Manually connect to a wireless network*



**Step 5:**

1. *Manually connect to a wireless network*

2. *Manually connect to a wireless network*

3. CHECK BOTH BOTTOM BOXES

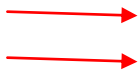
*Start this connection automatically*

*Connect even if the network is not broadcasting*

hcc-guest

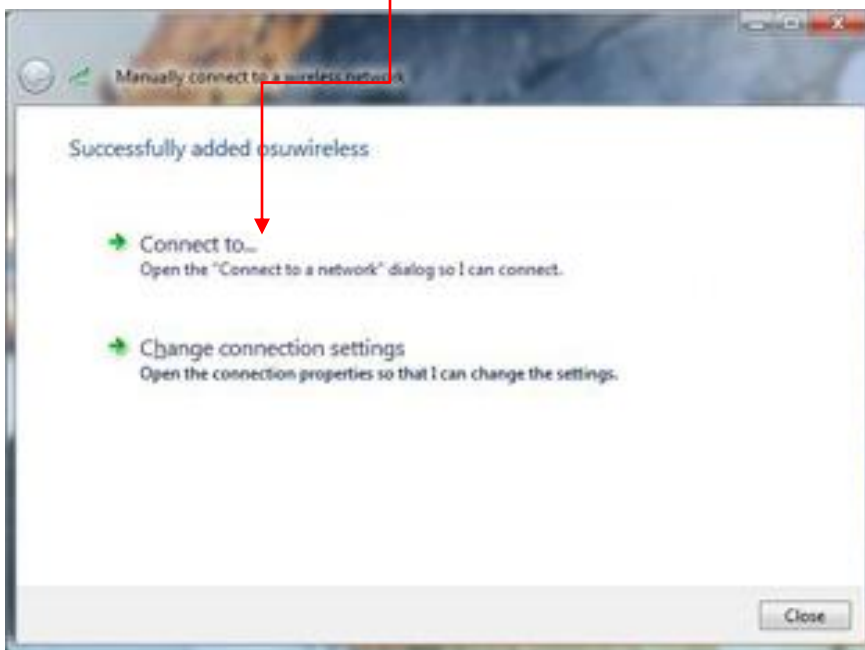
No authentication (open)

Select both



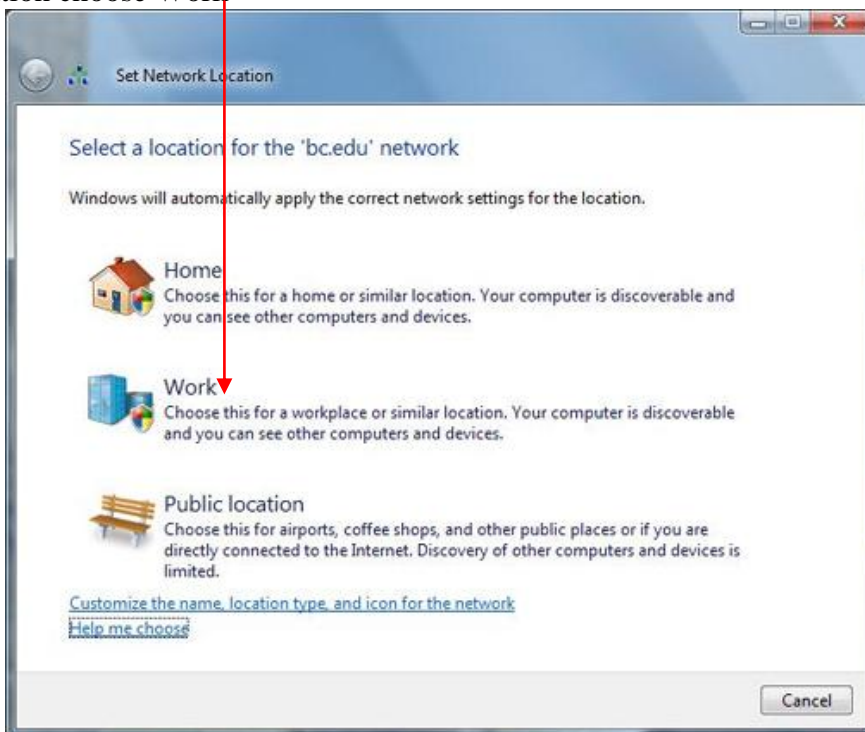
**Step 6:**

Click the "Next" button, then click "Connect to..." and that should be all. You successfully configured a connection to a wireless network.



**Step 7:**

Close network sharing center  
Set Network Location choose Work

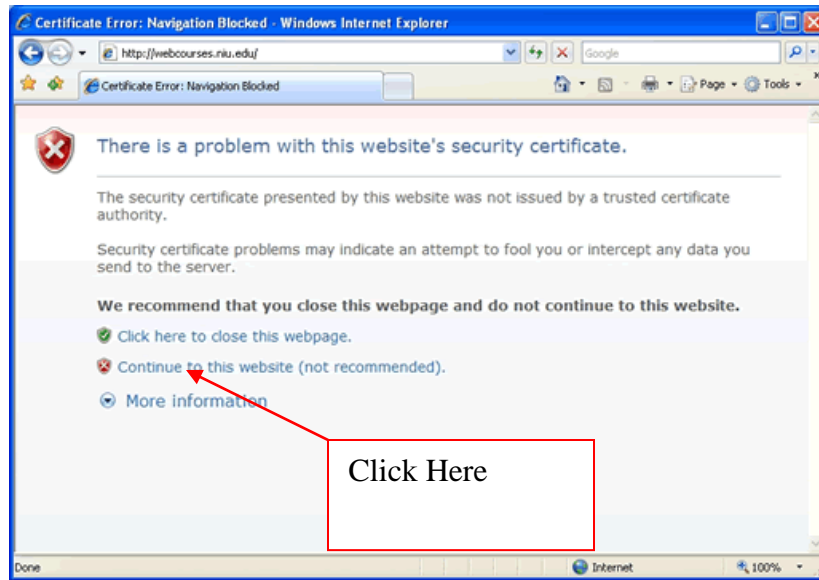


K h " p g g f " r g t o k u u k q p " v q " e q p v k p w g " u c { " õ { g u ö

**Step 8:**

You should now be connected to the internet. **Open** Internet Explorer.

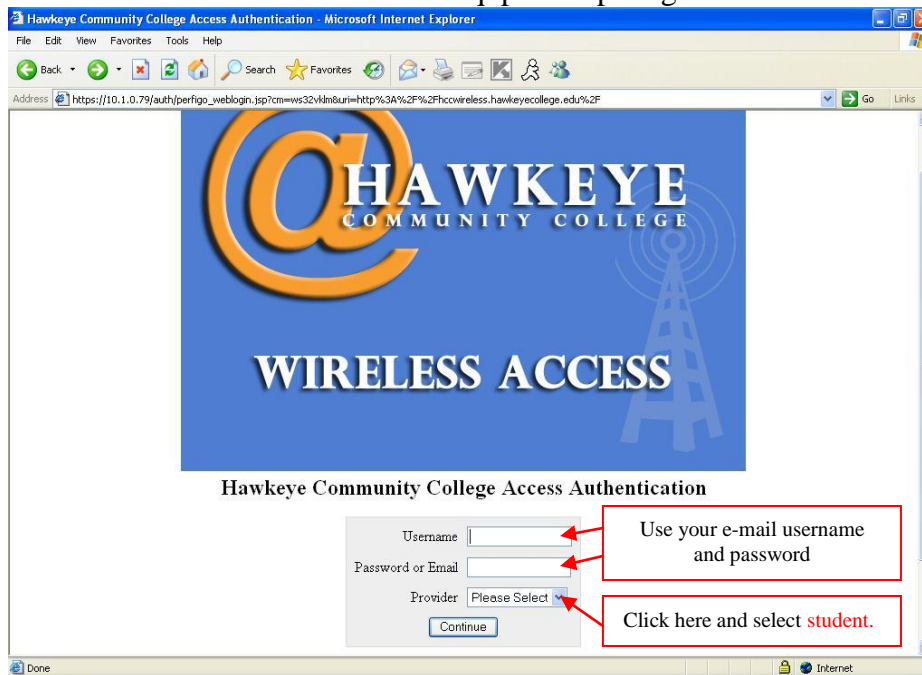
If you see the following page **click** ð E q p v k p w g " v q " v j k u " y g d u k v g " \* p q v "



**Step 9:**

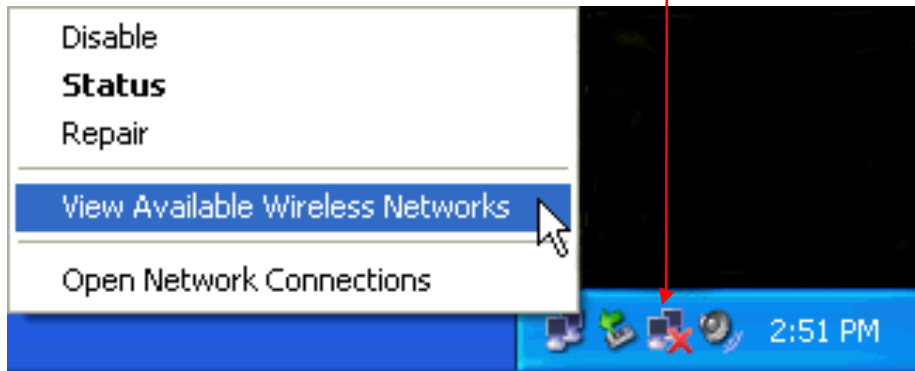
You should now be brought to the Authentication Page. **Enter** the Username and Password you use for e-mail, **select** student from the dropdown list, then **click**

ð E q p v k p w g ö

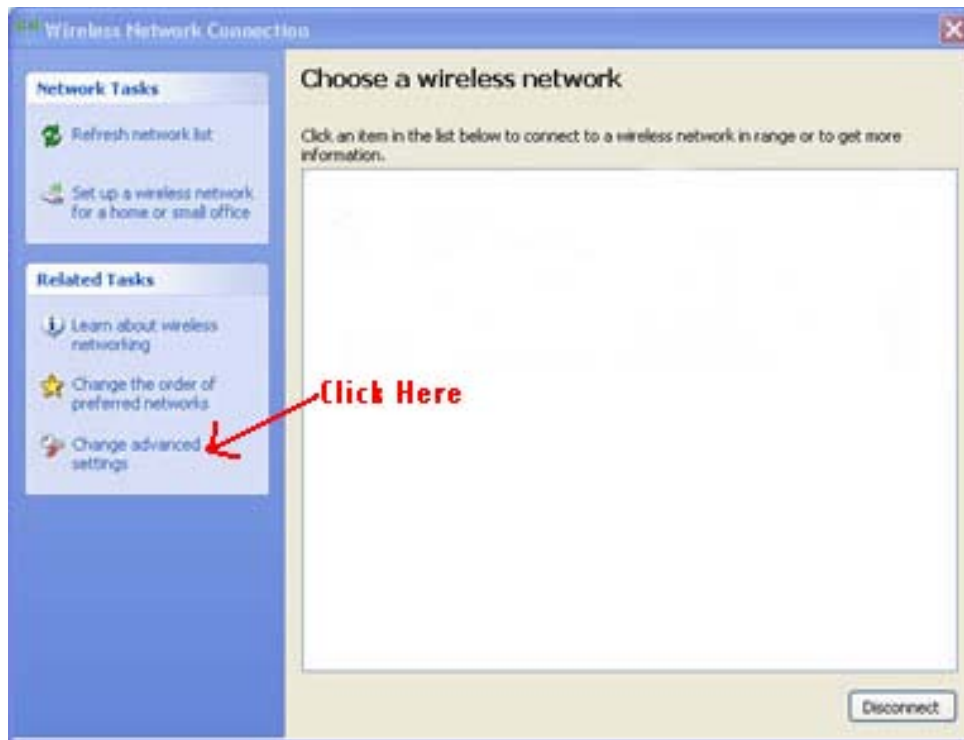


## Instructions for Windows XP users:

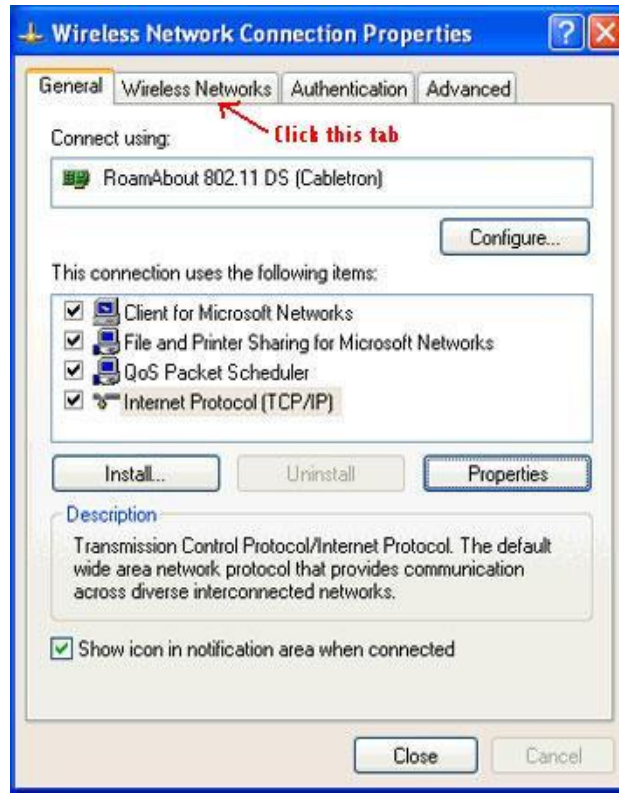
**Step 1:** Right click on wireless network icon by clock and click "View Available Wireless Networks"



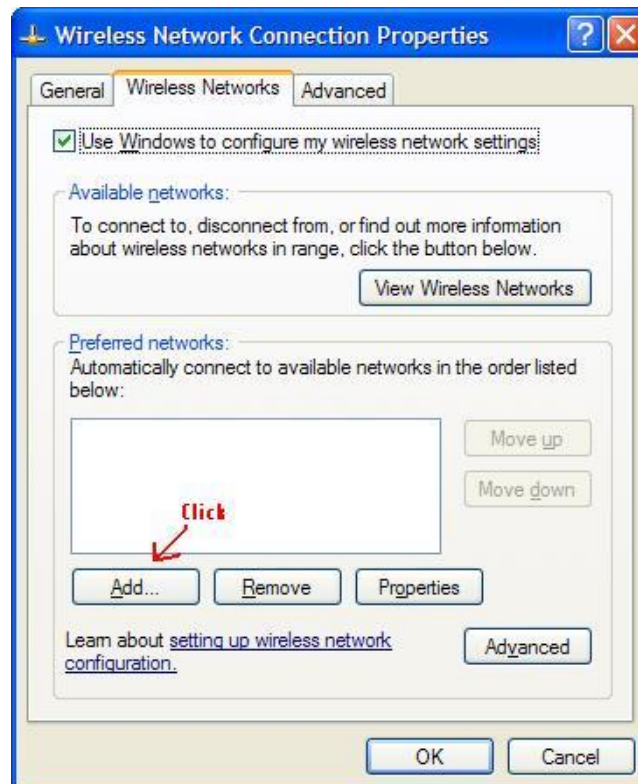
**Step 2:** Click "Change advanced settings"



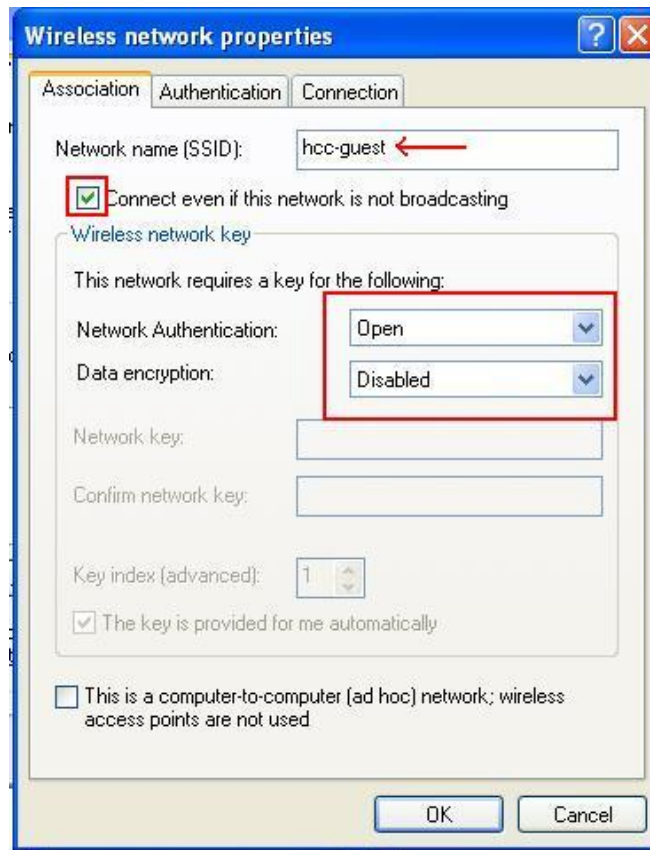
**Step 3:** Click q p " v j g " ð Y k t g n g u u " P g v y q t m u ö " v c d 0



**Step 4:** Click ð C f f í ö " d w v v q p 0

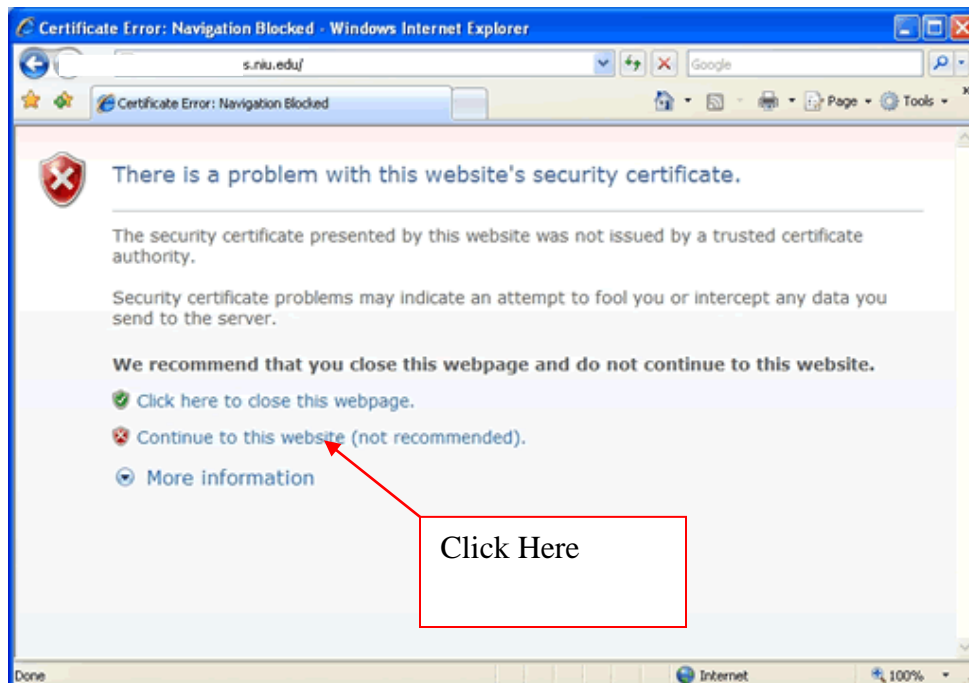


**Step 5:** Type "hcc-guest" in the Network name (SSID) field. **Make sure** Network Authentication is set to "Open" and Data Encryption is set to Disabled. **Click OK.**

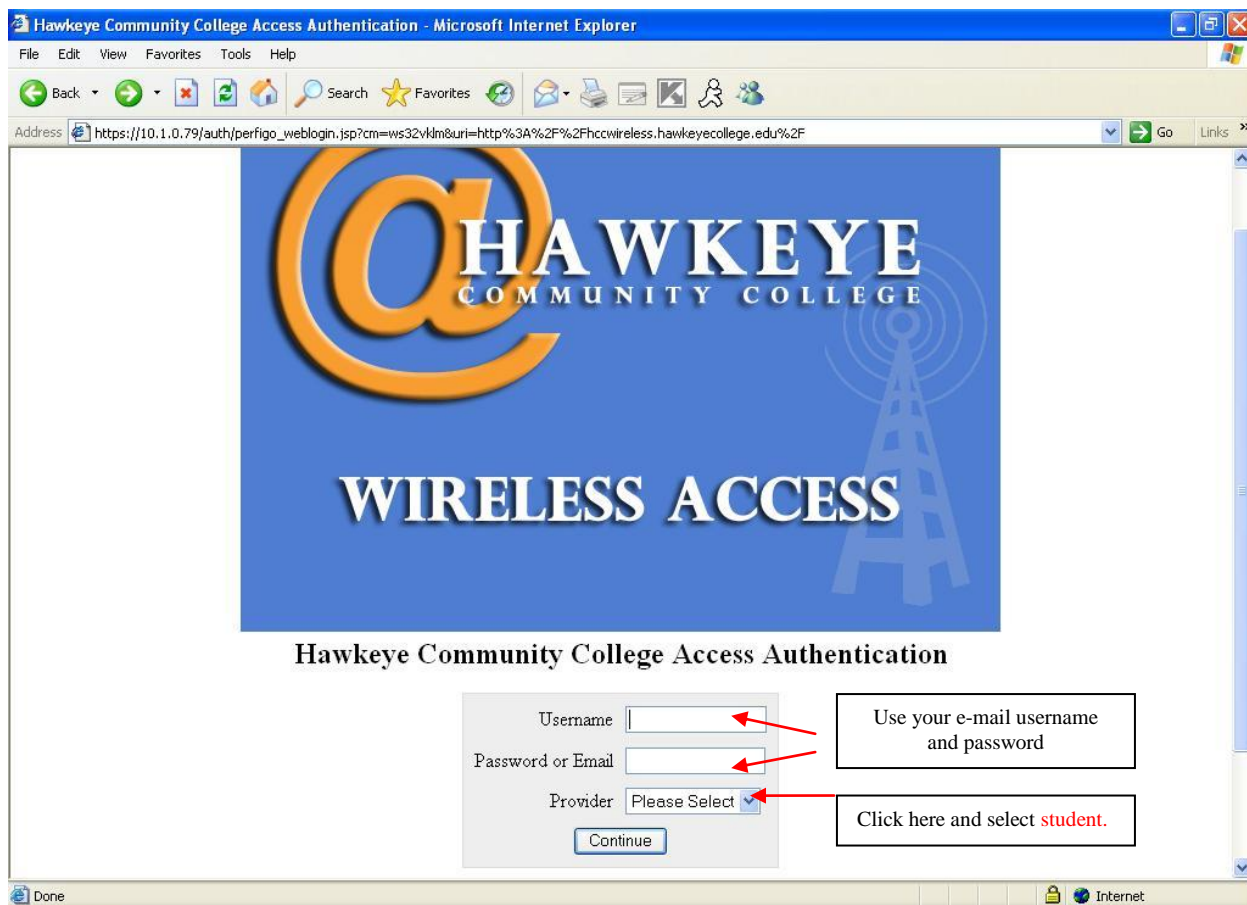


**Step 6:** You should now be connected to the internet. **Open** Internet Explorer.

-If you see the following page **click** on the "Continue to this website (not recommended)" link.



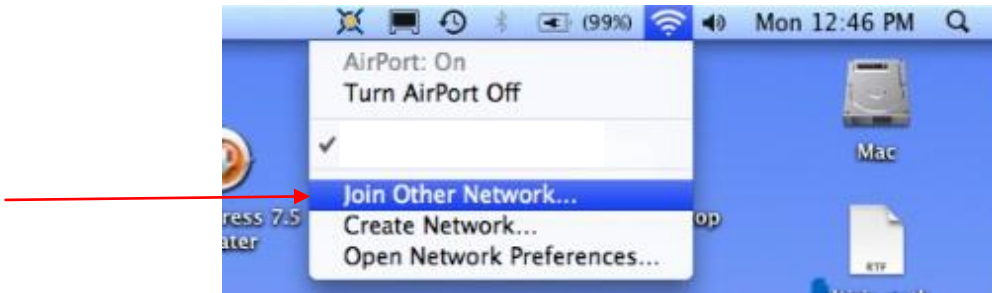
**Step 7:** You should now be brought to the Authentication Page. **Enter** the Username and Password you use for e-mail, **select** student from the dropdown list, then **click** Continue



## Instructions for MAC users:

### Step 1:

- U g n g e v " ö L q k p " Q v j g t " P g v y q t m ö



### Step 2:

- K p " v j g " ö P g v y q t m " P w g u ö ö " d q z " v { r g " ö j e e
- K p " v j g " ö U g e w t k v { ö " d q z " e j q q u g " ö P q p g ö
- C n u q . " e j g e m " v j g " ö T g o g o d g t " v j k u " p g v y q t m ö " d q z



### Step 3:

- H k p c n n { . " e n k e m " v j g " ö L q k p ö " d w v v q p " c v " v j g " d q v v q
- If brought to the *Authentication Page*, follow instructions on page 8

# Instructions for IPOD users:

## Step 1:

V q w e j " v j g " õ U g v v k p i u ö " k e



f " j q o g " U e t

## Step 2:

E n k e n H " K ö ö Y " K k e q p " c v " v j g " v q r " q h " v j g " n k u v



**Step 3:**

E n k e m " q p "p ð" qv{ jr gg t" öv .j "g v" jp ggi wyg qi tvnø "" pk q o. g" "e öj jq eq ai g " v j g " u g e w t l



**Step 4:**

Once you have follow g f " v j g u g " u v g r u " c p f " berdnretd and ready to use the k p ö " { q Internet. Your next screen should look like this:



**Step 5:**

Q r g p " w r " ö U c h c t k ö 0 "

You should be able to load any websites if your wireless works and it is connected correctly. If brought to the **Authentication Page**, follow instructions on **page 8**